

Can a Creative Commons licence be used where the copyright material includes material owned by a third party?

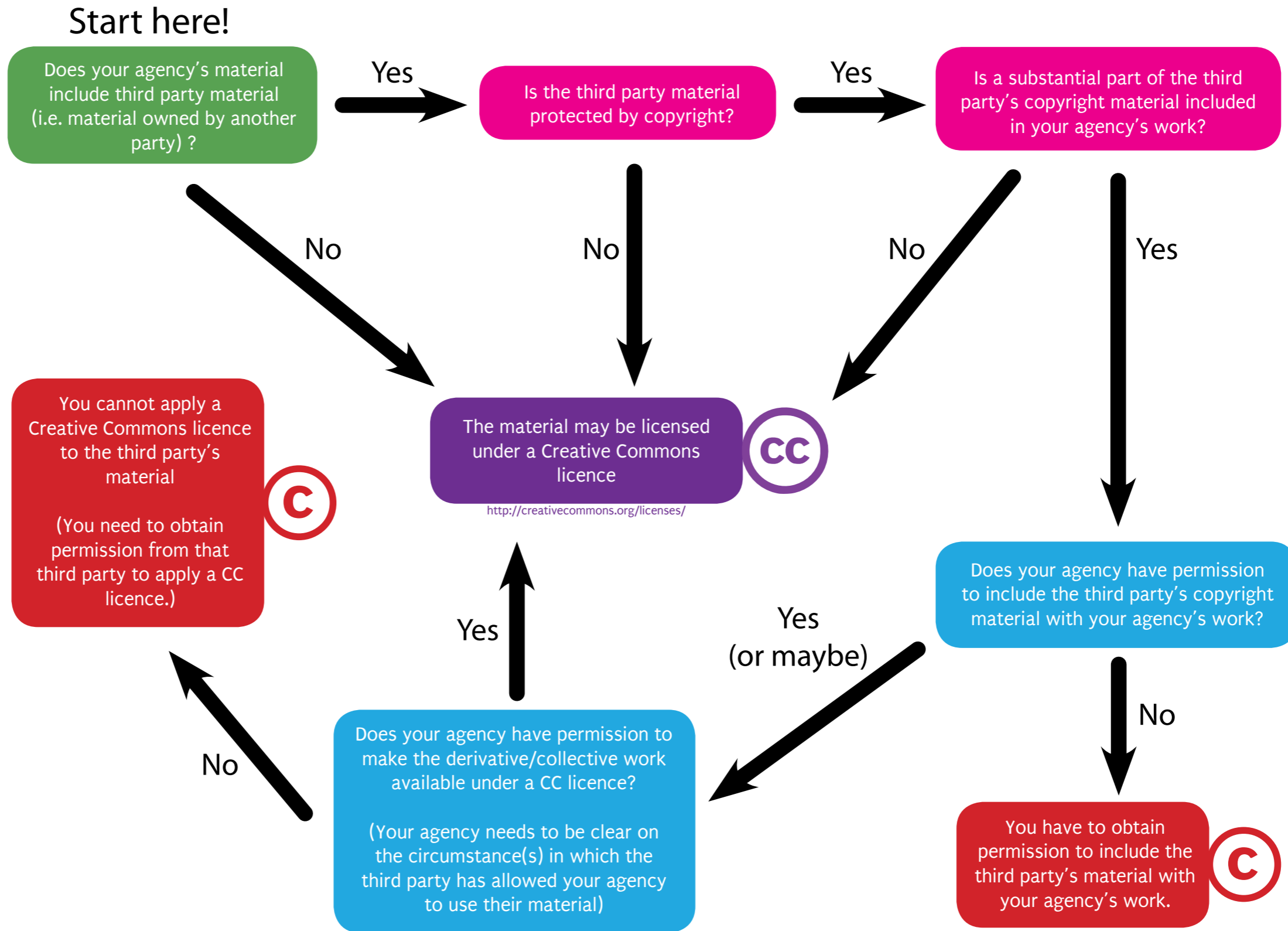
Instructions

Where government copyright material contains material owned by another party (i.e. a third party), this factsheet can help you to determine whether your agency can apply a Creative Commons licence to the material.

This factsheet should be used in conjunction with our guide: Fitzgerald, Anne M. and Hooper, Neale and Foong, Cheryl (2010) *Using Creative Commons 3.0 Australia Licences on Government Copyright Materials* <http://eprints.qut.edu.au/38364/> (see in particular, the 'Checklist for applying a Creative Commons licence to government material').

Start at the *green question box* and, following the arrows that correspond with your answer, make your way through the *pink* and *blue* questions until you reach a *red* or *purple licence box*. That box will indicate the right licence for you or what other permissions are needed.

For more information about the CC licences, see <http://creativecommons.org.au/licences>. For more information about Creative Commons and Government in Australia, see <http://creativecommons.org.au/sectors/government>.



Prepared by Professor Anne Fitzgerald, Neale Hooper and Cheryl Foong, QUT in association with Creative Commons Australia (original design and illustrations by Elliott Bledsoe, adaptations by Jimmy Ti). This factsheet is licensed under a Creative Commons Attribution 3.0 Australian licence, <http://creativecommons.org/licenses/by/3.0/au/>. The heading font, Mariana by fuex, is available under a Creative Commons Public Domain Certification, <http://creativecommons.org/licenses/publicdomain> and the copy font, Puritan 2.0 by benweiner, is available under the SIL Open Font License, <http://scripts.sil.org/OFL>.