



Queensland University of Technology
Brisbane Australia

This may be the author's version of a work that was submitted/accepted for publication in the following source:

Heineger, Karyn, Hocking, Kathy, Paxman, Nanette, Llewellyn, Stacey, Pelecanos, Anita, & [Coyer, Fiona](#) (2021)

Identifying contributing factors to tracheostomy stoma breakdown: A retrospective audit in a single adult intensive care unit.
Wound Practice and Research, 29(1), pp. 10-17.

This file was downloaded from: <https://eprints.qut.edu.au/210235/>

© Consult author(s) regarding copyright matters

This work is covered by copyright. Unless the document is being made available under a Creative Commons Licence, you must assume that re-use is limited to personal use and that permission from the copyright owner must be obtained for all other uses. If the document is available under a Creative Commons License (or other specified license) then refer to the Licence for details of permitted re-use. It is a condition of access that users recognise and abide by the legal requirements associated with these rights. If you believe that this work infringes copyright please provide details by email to qut.copyright@qut.edu.au

License: Creative Commons: Attribution-Noncommercial 4.0

Notice: *Please note that this document may not be the Version of Record (i.e. published version) of the work. Author manuscript versions (as Submitted for peer review or as Accepted for publication after peer review) can be identified by an absence of publisher branding and/or typeset appearance. If there is any doubt, please refer to the published source.*

<https://doi.org/10.33235/wpr.29.1.10-17>

Title Page

Title: Identifying contributing factors to tracheostomy stoma breakdown; A retrospective audit in a single adult intensive care unit.

Authors

Karyn Heineger, RN, Grad Cert (Wound Care)

Clinical Nurse Consultant Tracheostomy Management Service, Royal Brisbane and Women's Hospital

Email: karyn.heineger@health.qld.gov.au

Kathy Hocking RN, Grad Dip (Wound Care)

Acting Clinical Nurse Consultant Skin Integrity Service, Royal Brisbane and Women's Hospital

Nanette Paxman

Physiotherapist – Advanced (Tracheostomy), Royal Brisbane and Women's Hospital

Stacey Llewellyn, BMaths BAppSc(Hons) MBiostatistics

Biostatistician, Statistics Unit, QIMR Berghofer

Anita Pelecanos, BSc (Hons), BHSc (Hons)

Biostatistician, Statistics Unit, QIMR Berghofer

Fiona Coyer, RN, MSc Nursing, PhD

Professor of Nursing, Joint appointment with Royal Brisbane and Women's Hospital, Metro North Hospital Health Service and School of Nursing, Queensland University of Technology

Visiting Professor, Institute for Skin Integrity and Infection Prevention, University of Huddersfield.

Funding. Nil

Conflict of interest

The authors declare no conflict of interested related to this manuscript.

Acknowledgements

The authors thank Fiona Boch and Jessica Brown for this assistance with data extraction.

Abstract

Introduction

Tracheostomies are a common adjunct to therapy for critically ill patients in the intensive care unit (ICU). This study sought to identify the incidence of, and demographic, clinical and care process factors related to tracheostomy-related skin injury (TRSI) in ICU patients.

Methods

Conducted in a 36-bed ICU of an Australian metropolitan tertiary referral acute care health facility, this study employed a retrospective review of patient records between February 2015 and December 2016 for patients who had a tracheostomy inserted during an ICU admission. Records were reviewed for the patient's admission or a 20-day observation period; whichever was shorter.

Results

Of the 102 patients included, 66 were male (64.7%) and their mean age was 50 years (SD 18.3). Of these patients, 23 (22.5%) developed a TRSI. No association was found between patient characteristics, tracheostomy insertion method and the development of a TRSI, however, the use of non-adjustable flange tubes was associated with the development of TRSI ($p=0.023$). Omissions in nursing documentation of care processes for tracheostomies were observed.

Conclusion

This study addressed a specific medical device, the tracheostomy tube, providing evidence of TRSI occurrence in the intensive care setting. Although no common demographic, clinical or care process factors were associated with TRSI development, findings from this study highlight a deficiency in nursing documentation.

Background

Development of medical device related pressure injuries (MDRPI) results from the use of devices for therapeutic or diagnostic purposes and are well recognised as separate from traditional pressure injuries (PI)¹. Studies by Barakat-Johnson et al.^{2,3}, Cooper et al.⁴ & Hanonu⁵ found the development of a MDRPI can be difficult to prevent when the device is essential to a patient's treatment and patients in ICU are a vulnerable patient group due to the high use of medical devices in their care. Currently there is little information relating to the type of injury caused by different devices in the critical ill patient population⁶. This study examines tracheostomy tubes and skin injuries related to this specific medical device.

Critically ill patients in the ICU often require multiple devices for monitoring of physiologic parameters whilst receiving medical treatment⁵. The most common risk factor for developing a MDRPI has been reported as patients with impaired sensory perception, that is, ICU patients where therapeutic and pharmacological management of their critical illness may limit their sensory perception and ability to inform staff of discomfort or pain. The high use of medical devices in ICU combined with the known risk factors of pressure, shear and altered skin microclimate create a formula for the development of MDRPI within the ICU patient cohort⁷. Although not an exhaustive list, other contributing factors amongst the ICU patient group include prolonged immobility, reduced sensory perception due to paralysis/sedation, hypoxia requiring mechanical ventilation, haemodynamic instability resulting in poor tissue perfusion and the use of vasopressors⁸.

One commonly used medical device in ICU is a tracheostomy tube. A tracheostomy creates an artificial opening or stoma into the trachea and is either performed surgically or by percutaneous dilation technique. The stoma is kept patent by inserting a tube, generally made of thermosensitive polyvinyl chloride, through the opening⁹. Temporary tracheostomy is increasingly used earlier in the management of the general ICU population with the following factors contributing to this; 1) a reduction in the need for sedation 2) promotes earlier ventilator weaning and mobilisation; and 3) the uptake of percutaneous dilational techniques (PDT); a quick and relatively safe procedure which can be performed at the bedside by ICU physicians¹⁰. The four general indications for a tracheostomy are prolonged mechanical ventilation, airway patency, airway protection and secretion management¹¹. Peri-stomal skin breakdown or PI development is a known complication of tracheostomy¹¹.

Loss of skin integrity related to a tracheostomy is multifactorial and even the type of tracheostomy tube used may influence the risk of developing a MDRPI¹². For mechanically ventilated patients with

a tracheostomy downward traction of the tracheostomy tube caused by the weight of ventilator tubing produces pressure along the inferior margin of the stoma¹¹. This downward torque can also contribute to the tracheostomy flange causing pressure over the bony prominences of the clavicles at the sternal junction⁴. Excessive moisture from leakage of respiratory secretions and/or saliva pooled above the cuff leads to overhydration and changes in skin microclimate, which can lead to an increased risk of tissue breakdown⁷. These secretions may collect along the lower margin of the tracheostomy stoma, soak tracheostomy dressings and promote maceration of the skin⁴. Pressure from the tracheostomy tube against the mucosal lining of the trachea can also cause PIs to the mucosal lining¹. As the trachea is essentially anatomically straight the curved tracheostomy tube may not conform to the shape of the trachea which can lead to compression of the membranous/mucosal lining of the trachea¹³. This can then lead to increased leakage of respiratory secretions and/or saliva due to enlargement of the tracheal stoma.

Medical device related pressure injuries differ from other PIs as they generally conform to the pattern or shape of the device⁴ and it is the direct or indirect interaction of the device with the skin as opposed to body weight causing the injury⁷. Skin integrity loss or injury attributed to a tracheostomy does not conform to the definition of a MDRPI. This is because tracheostomy related skin injuries can be a mixture of mucosal and skin injuries related to a combination of a) pressure, b) medical device being placed through a surgical wound, and c) moisture either from humidification or perspiration between the tracheostomy flange and skin, or from leaked saliva and/or respiratory secretions from the stoma¹².

Evidence pertaining to tracheostomy related PI is scant. One study by O'Toole¹⁴ conducted in patients with only surgical tracheostomies identified a PI incidence pre-intervention of 10.9% (20/183) and an incidence of 1.3% (2/155) post implementation of a PI prevention bundle. However, this study is limited by a lack of clear definitions of PI around a stomal site and a sample of surgical tracheostomy insertions only.

At our study site tracheostomy insertions have become part of standard practice when indicated for specific patients in the ICU. In February 2015, the Tracheostomy Management Service (TMS) commenced operation. This is a multidisciplinary team, consisting of a medical staff specialist, clinical nurse consultant (CNC), physiotherapist and speech pathologist. This team supports ward staff in managing patients discharged from ICU with a tracheostomy, excluding those under the direct care of the Ear, Nose and Throat medical staff specialists. Part of the TMS clinical role includes regular

tracheostomy stoma skin inspections, development of stoma care plans and ensuring nursing staff report tracheostomy stoma skin injuries using the hospital adverse event reporting system.

An anecdotal increase in ICU tracheostomy-related skin injuries (TRSI) was observed by the TMS CNC and required further investigation. Current literature approximates 10% of all PIs are device related, however, there is a paucity of literature examining TRSI^{4,15}

Aims

The aims of this study were to 1) identify the incidence of TRSIs in patients in the ICU and 2) identify common demographic, clinical and care process factors amongst patients who developed a TRSI or stomal breakdown.

Study Design

The study used a retrospective chart review design.

Subjects/Patients

All adult patients admitted to the ICU from February 2015 until end-December 2016 who had a tracheostomy inserted, either surgical or percutaneous, during their admission were included. The commencement date was chosen as this was the date of commencement of the TMS service at this facility. Patients under the direct care of Ear Nose and Throat team were excluded as the TMS was not involved in their care or follow up.

Setting

The setting was the 36-bed ICU of a metropolitan tertiary referral acute care health facility in Brisbane, Australia. The ICU admits general medical, surgical and trauma patients with specialities including burn, neurosurgery and trauma emergencies. The ICU admits approximately 2,400 patients per year with an admission illness severity mean score of 18, as determined by the Acute Physiology and Chronic Health Evaluation (APACHE) II^{16, 23}. Mean length of patient stay is 3.6 days. Medical management is provided by specialist intensive care physicians. Patients are cared for at a ratio of one nurse per mechanically ventilated patient or one nurse to two non-mechanically ventilated patients.

Measurements

Patient clinical information was retrieved from the ICU electronic clinical information system. All patient data was provided to the researchers in re-identifiable form to allow cross checking of clinical

information system charting and notes. The first author reviewed all patient notes retrieved from clinical information system and cross checked these for accuracy. Data was collected in two-day blocks from the time of tracheostomy insertion for the patient's admission or a 20-day observation period; whichever was shorter. Data comprised of patient demographic and clinical characteristics including ICU discharge, and tracheostomy insertion procedural features. Data were collected related to medication administration and daily tracheostomy processes of care including stoma dressing replacement, tracheostomy suctioning, presence of stomal oedema, other skin site PIs, stage of PIs and enteral feeding. Tracheostomy suctioning frequency was defined as the highest frequency of suctioning occurring over the patient's ICU stay. Correct cares administration was defined as the proportion of patients with correct processes of cares administered for each two-day period. Cares administration was considered correct if the number of ordered cares as per the hospital-wide procedure for tracheostomy care in the two-day period were equivalent to the documented cares, with both less or more cares administered than what was ordered considered incorrect. Cares documentation was defined as the percentage of days for which cares were documented over the total time a patient was observed.

Procedures

This project was approved by the Hospital Human Research Ethics committee (HREC/17/QRBW/20). Following ethical and site governance approvals, the principal investigator identified all patients who had a tracheostomy in the ICU through the TMS master list and reviewed all relevant patient records from the ICU clinical information system. A master log to de-identify patients was created and all patients were assigned a unique study number. Intensive care medical staff specialists who performed tracheostomy procedures were allocated a code number for de-identification purposes. Data collected was stored electronically on a password protected computer database held by the principal investigator.

Outcome measure

The outcome measure was the development of any TRSI, defined as an adverse change to the integrity of the tracheostomy stoma and/or surrounding peristomal skin. This differs to a PI which is defined as "localised injury to the skin and/or underlying tissue usually over a bony prominence, as a result of pressure, or pressure in combination with shear"¹.

TRSI may be evidenced as an area of tissue loss, ranging from superficial epidermal loss to mid to deep dermal loss generally occurring in a crescent shape with even edges along the inferior margin of the

stoma. The area of tissue loss can have the appearance of a thin layer of yellow devitalised tissue or at other times it can present as pale pink. The stomal margins may be macerated due to excess moisture from saliva and/or respiratory secretions. (Image 1). Moisture causing maceration also affects skin integrity, which may make epidermal layers more susceptible to PI⁵.

[Image 1]

In some cases, hypergranulation tissue may be present either as a direct result from tube irritation of stomal margins or excess moisture or a combination of both, or can occur during the healing process. The wound edges are generally flat and gently slope to the base of the wound. PDT are associated with increased technical difficulties when compared to surgical tracheostomy¹⁷. Skin damage or tearing can also occur during the actual dilatation process leaving uneven skin edges and exposing underlying tissue. Image 2 illustrates the uneven V-shaped skin tear that can happen during a percutaneous dilatational insertion which differs from the typical even crescent shape stomal margin (Image 1).

[Image 2]

TRSI were not staged using the recognised PI stages¹ as it was difficult to define aetiology of the wound given multiple causative factors were often involved. This decision was endorsed by the facility Skin Safety Committee and supported by recent international guidelines¹ recommending maceration, excoriation or skin tears should not be described as stage 2 PI.

Analysis

Data were analysed using SPSS version 23 (IBM Corp., Armonk, NY). Categorical variables were summarised using frequency and percentage and continuous variables by mean and standard deviation (SD) for normally distributed variables or median and interquartile range (IQR) for non-normally distributed variables. Associations with time to TRSI development for categorical demographic, comorbidities, tracheostomy, PI variables of interest were assessed using Kaplan-Meier analysis and compared using the Log-rank test. For continuous variables, associations with time to TRSI development were assessed using Cox proportional regression. Statistical significance was set at $p < 0.05$.

Results

There were 102 patients included who were admitted to ICU and had a tracheostomy inserted during their admission between February 2015 and December 2016. The majority of patients were male (64.7%, 66/102) with a mean age of 50 years (SD 18.3). Of these patients, 23 (22.5%) developed a TRSI during their ICU admission. Table 1 summarises patient characteristics. Table 2 summarises the factors associated with tracheostomy insertion of all included patients.

[Table 1]

[Table 2]

Table 3 summarises the post-tracheostomy insertion characteristics and clinical care processes in the audit population during ICU stay and highlights the low percentage of correct care administered.

[Table 3]

A number of patients were discharged from ICU prior to either TRSI development or before the end of the 20-day observation period. Patients who were discharged from ICU prior to the full 20 days of observation were marked as censored and their data collection was ceased at the time at which they were discharged. Censoring of data occurred as the observed value of some variables was only partially known i.e. patients were discharged prior to completion of the 20-day observation period post tracheostomy insertion therefore information about time to TRSI development was incomplete. Patients who remained in ICU for the full 20 days were censored and data collection was completed irrespective of TRSI development or not.

Kaplan-Meier analyses for the association of factors of clinical interest with TRSI development are shown in Table 4. In many cases the confidence intervals or the median survival estimate was unable to be determined due to insufficient events. The only factor found to be significantly associated with time to TRSI development was tube type ($p=0.023$). There were 23 TRSI that developed in patients who had non-adjustable flange tubes (65 censored), whilst there were no patients who developed a TRSI in patients who had adjustable flange tubes (14 censored). The median survival time to development of a TRSI was 14 days (95% CI: 7.2 – 20.8 days) for patients with non-adjustable flange tubes. The median survival time to the development of TRSI in patients with adjustable flange tubes was not defined as all data were censored, however the median survival time was greater than 20 days.

[Table 4]

Discussion

Of the 102 patients who received a tracheostomy in ICU, 73% had a percutaneous insertion and a standard Portex® Blueline Ultra adult tracheostomy tube (non-adjustable flange), with or without suctionaid port was inserted in 86% of these patients. The use of a non-adjustable flange tube may be associated with a higher incidence of TRSI due to its more frequent use leading to greater numbers of this tube type in this study. The use of an adjustable flange tube with its increased length of tube protruding from the neck creates a longer lever arm and increased potential for downward pressure/traction at the stoma site which may potentially increase the risk of TRSI. However, due to low study numbers of the association between this tube type and TRSI cannot be accurately reported on.

We found no evidence of an association between methods of insertion, administration of inotropes prior to or at the time of tracheostomy insertion and the development of a TRSI. Further, no specific patient characteristics could be established as contributing to the development of a TRSI. Literature suggests all patients with a medical device are at risk for a device related PI and no unique risk factors have been found that allow identification of high-risk patients^{18, 7}

Currently, there is no unique predictive tool for assessing risk for development of a TRSI. Therefore, clinical judgement and visual skin inspections are required to assess for MDRPI, given this, some may go unrecognised or recorded¹⁹. A study in 2019 by Sankovick²⁰ demonstrated variations in staging of PI by nurses, which was related to variability in assessment skills and knowledge deficits. This finding applied in the context of TRSI could mean that TRSI is potentially more difficult to diagnose. At our study site, a dedicated TMS CNC, a senior clinician with well-honed clinical assessment and judgement skills increases the potential for early identification and management of TRSI.

Appropriate peristomal skin care, and application of a dressing to manage moisture and off load pressure are interventions designed to reduce the risk of device related PI²¹. Regular skin inspections and keeping the site as dry as possible combined with positioning the tube in the neutral position and off-loading weight from ventilator circuit are integral to maintaining skin integrity around a tracheostomy tube^{11, 12}. The exact mechanism and mechanical forces leading to skin injury caused by medical devices have not been fully explained²². Internationally recognised classifications for PI are

widely accepted and new classification for mucosal injuries are now available¹. However, an injury caused by a tracheostomy tube cannot be easily defined by either category.

An unexpected finding arising from this study was the lack of adherence and/or documentation of tracheostomy related stoma cares by nursing staff. Given this was a retrospective audit, data recorded relies on what was documented in the patient's chart, therefore, care may have been delivered but not recorded. The longest time cares were not documented was for seven consecutive time-points (14 days), with this patient not developing a TRSI. A single patient was also found to not have documented cares for six consecutive time-points (12 days), as well as two patients with five time-points (10 days) and two patients with 4 time-points (8 days). None of these patients developed TRSI. Previous work by Barakat-Johnson² supports this finding. Barakat-Johnson² identified that nursing staff have an awareness for the need of skin inspections for high risk patients, however assessment of the skin underneath a medical device, i.e. tracheostomy flange, was not something nurses identified they would do on a daily basis.

Limitations and strengths.

To our knowledge this is the first study to review and describe TRSI in an adult ICU population which is not associated with models of care or tracheostomy care bundles. This study is limited by the sample size and sampling technique and there is likely an underestimate of the true incidence of PI development, as many were not observed for the full 20-day period or the full ICU length of stay. Therefore, we cannot be confident that this estimate is accurate.

Conclusion

This study addresses the tracheostomy tube, providing evidence regarding TRSIs in the intensive care setting, an area with limited research and data. Of the 102 patients who received a tracheostomy in the ICU, 23 (22.5%) developed a TRSI indicating a high percentage of skin injury in this vulnerable patient population. In this study the use of non-adjustable flange tubes was associated with the development of TRSI, however caution should be applied weighting this finding too heavily due to the small numbers of patients with adjustable flange tubes and the low proportion of patients who developed TRSI. Findings from this study also highlight a lack of adherence to procedure/guidelines and/or documentation by nursing staff in the provision of tracheostomy cares.

References

1. European Pressure Ulcer Advisory Panel (EPUAP), National pressure Injury Advisory Panel (NPIAP), Pan Pacific Pressure Injury Alliance (PPPIA). (2019) *Prevention and Treatment of Pressure Ulcers/Injuries: Clinical Practice Guidelines. The international guideline*. 3rd Ed., EPUAP, NPIAP, PPPIA.
2. Barakat-Johnson, M., Barnett, C., Wand, T & White, K., (2017) Medical device-related pressure injuries: An exploratory descriptive study in an acute tertiary hospital in Australia, *Journal of Tissue Viability*, 26, 246-253
3. Barakat-Johnson, M., Lai, M., Wand, T., Li, M., White, K. & Coyer, F., (2019) The incidence and prevalence of medical device-related pressure ulcers in intensive care: a systematic review, *Journal of Wound Care*, 28 (8), 512-520
4. Cooper, K. (2016) Evidence-based Prevention of Pressure Ulcers in the Intensive Care Unit, *Critical care Nurse*, 33 (6), 57-67
5. Hanonu, S. & Karadag, A. (2016) A Prospective, Descriptive Study to Determine the Rate and Characteristics of and Risk Factors for the Development of Medical Device-related Pressure Ulcers in Intensive Care Units, *Ostomy Wound Management*, 62 (2), 12-22
6. Delmore, B & Ayello, E., (2017) Pressure Injuries Caused by Medical Devices and Other Objects: A Clinical Update, *American Journal of Nursing*, 117 (12), 36-44
7. Gefen, A., Alves, P., Guido, C., Coyer, F., Milne, C., Ohura, N., Waters, N & Worsley, P. (2020) Device-related pressure ulcers: SECURE prevention, *Journal of Wound Care*, International Consensus Document, 29 (2), S1-S51
8. Coyer, F., Gardner, A., Doubrovsky, A. et al. (2015) Reducing Pressure Injuries in Critically Ill Patients by Using a Patient Skin Integrity Care Bundle (INSPIRE). *American Journal of Critical Care*, 24 (3), 199-209
9. Mitchell, R., Hussey, H., Setzen, G. et al., (2013) Clinical Consensus Statement: Tracheostomy care, *Otolaryngology – Head and Neck Surgery*, 148(1):6-20. DOI: 10.1177/0194599812460376

10. Bodenham, A., Bell, D., Bonner, S., Branch, F., Dawson, D., Morgan, P., McGrath, B. & Mackenzie, S. (2014) Standards for the care of adult patients with a temporary Tracheostomy; STANDARDS AND GUIDELINES, Intensive care Society Standards
11. Morris, L. & Whitmer, A. (2013) Tracheostomy Care and Complications in the Intensive care Unit, *Critical Care Nurse*, 33 (5), 18-31
12. Dixon, L., Mascioli, S., Gillin, T., Upchurch, C & Bradley, K. (2018) Reducing Tracheostomy -Related Pressure Injuries, *AACN Advanced Critical Care*, 29 (4), 426-431
13. Hess, D. & Altobelli, N., (2014) Tracheostomy Tubes, *Respiratory Care*, 59 (6), 956-970
14. O'Toole, T., Jacobs, N., Hondorp, B., Crawford, L., Boudreau, L., Jeffe, J., Stein, B. & LoSavio, P. (2017) Prevention of Tracheostomy-Related Hospital-Acquired Pressure Ulcers, *Otolaryngology-Head and Neck Surgery*, 156 (4), 642-651
15. Coyer, F., Stotts, N. & Blackman, S. (2014) A prospective window into medical device-related pressure ulcers in intensive care, *International Wound Journal*, 11 (6), 656-664
16. ANZICS Centre for Outcome and Resource Evaluation 2018 Report, ISBN: 13:978-1-876980-55-9.
17. Putensen, C., Theuerkauf, N., Guenther, U., Vargas, M & Pelosi, P. (2014) Percutaneous and surgical tracheostomy in critically ill adult patients: a meta-analysis, *Critical Care*, 18, 544
DOI:10.1186/s13054-014-0544-7
18. Cooper, K., McQueen, K., Halm, M & Flayter, R. (2020) Prevention and Treatment of Device Related Hospital-Acquired Pressure Injuries, *Clinical Evidence Review*, 29 (2), 150-154
19. Jackson D., Sarki, A., Betteridge, R & Brooke, J (2019) Medical device-related pressure ulcers: A systematic review and meta-analysis, *International Journal of Nursing Studies*, 92, 109-120.
<https://doi.org/10.1016/j.ijnurstu.2019.02.006>
20. Sankovich, K, Fennimore, L, Hoffmann, R & Ren, D. (2019) The Impact of Education and Feedback on Accuracy of Pressure Injury Staging and Documentation by Bedside Nurses, *Patient Safety*, September, 10-17, DOI: 10.33940/HAPI/2019.9.2

21. Haesler, E., (2017) Evidence Summary: Pressure injuries: Preventing medical device related pressure injuries, *Wound Practice Research*, 25 (4), 214-216

22. Black, J. & Kalowes, P. (2016) Medical device-related pressure ulcers, *Chronic Wound Care Management and Research*, 6 (3), 91-99

23. Knaus WA, Draper EA, Wagner DP, Zimmerman JE. (1985) APACHE II: a severity of disease classification system. *Crit Care Med*;13(10):818–29.

Images

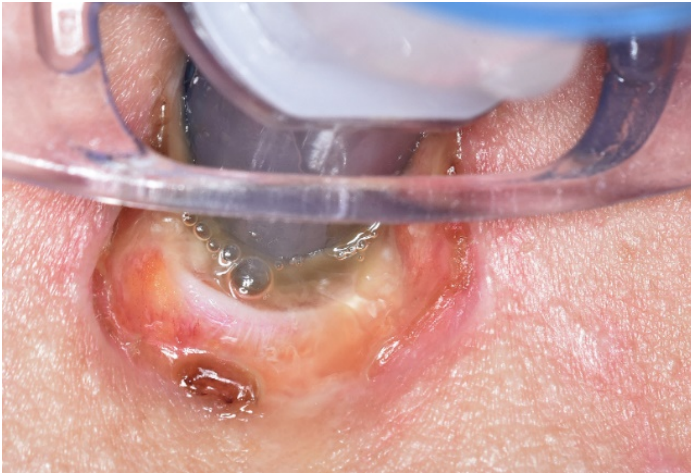


Image 1 Tracheostomy stoma showing maceration from moisture



Image 2 Tracheostomy stoma showing V-shaped margin

Tables

Table 1 Patient characteristics

Variable	Overall (n=102)
Gender, n (%)	
Male	66 (64.7%)
Female	36 (35.3%)
Age, years, mean (SD)	49.7 (18.3)
ICU length of stay, days, mean (SD)	24.3 (12.2)
Mechanical ventilation time, hours, mean (SD)	481.9 (263.4)
BMI, kg/m ² , n (%)	
Underweight or Normal (BMI <25)	38 (37.3%)
Overweight (BMI 25 - 29)	37 (36.3%)
Obese (BMI ≥30)	27 (26.5%)
APACHE II score, mean (SD)	20.8 (7.7)
APACHE III diagnostic category, n (%)	
Non-surgical	16 (15.7%)
Surgical	86 (84.3%)
Comorbidities, n (%)	
None	32 (31.4%)
One	26 (25.5%)
Two or more	44 (43.1%)
Pressure injury present prior to Insertion, n (%)	20 (19.6%)
Other PI prior to tracheostomy insertion (n=20), n (%)	
1	9 (45.0%)
2	6 (30.0%)
3	5 (25.0%)
Other PI: Mucosal, n (%)	7 (6.9%)
Other PI: Skin, n (%)	17 (16.7%)
Other PI (not TRSI): Highest stage observed (n=18), n (%)	
Stage 1	5 (27.8%)
Stage 2	6 (33.3%)
Stage 4	1 (5.6%)
Suspected deep tissue injury	4 (22.2%)
Unstageable	2 (11.1%)

Other PI: a non-tracheostomy PI

Table 2 Tracheostomy tube insertion characteristics

Variable	Overall (n=102)
Noradrenaline prior to or at insertion, n (%)	45 (44.1%)
Vasopressin prior to or at insertion, n (%)	6 (5.9%)
Adrenaline prior to or at insertion, n (%)	4 (3.9%)
Steroid prior to or at insertion, n (%)	13 (12.7%)
Tracheostomy insertion method, n (%)	
Percutaneous	74 (72.5%)
Surgical	28 (27.5%)
Tracheostomy tube type (n=101), n (%)	
Adjustable flange [^]	14 (13.9%)
Non-adjustable flange	87 (86.1%)
Tracheostomy tube type (n=101), n (%)	
Portex™ [Smiths Medical] Blue Line™ Adjustable Flange	7 (6.9%)
Portex™ Blueline Ultra Suctionaid	60 (59.4%)
Portex™ Blueline Ultra	27 (26.7%)
Portex™ Uniperc Adjustable Flange	7 (6.9%)
Tracheostomy tube size (French gauge) (n=101), n (%)	
7	16 (15.8%)
7.5	5 (5.0%)
8	75 (74.3%)
9	5 (5.0%)
Insertion complication (n=20), n (%)	
Multiple punctures	10 (50.0%)
Bleeding	2 (10.0%)
Cartilage fracture	4 (20.0%)
Other	2 (10%)
Bleeding and Other	1 (5.0%)
Multiple punctures and Cartilage fracture	1 (5.0%)

[^] includes Portex Blueline Adjustable Flange and Portex Uniperc Adjustable Flange tubes

Table 3 Day 2 to Day 20 post tracheostomy insertion: Patient characteristics and clinical care processes

Variable	Overall n=102
ICU length of stay, days, mean (SD)	24.3 (12.2)
Mechanical ventilation time, hours, mean (SD)	481.9 (263.4)
Greatest suctioning frequency recorded during ICU stay, n (%)	13 (12.7%)
1-2 hourly	71 (69.6%)
2-3 hourly	18 (17.6%)
Proportion undocumented cares of total ICU stay (%), median (IQR)	12.5 (16.0)
Correct cares administered (yes), n (%)	
Day 2 (n=102)	2 (2.0%)
Day 4 (n=87)	1 (1.1%)
Day 6 (n=73)	2 (2.7%)
Day 8 (n=58)	0 (0.0%)
Day 10 (n=45)	2 (4.4%)
Day 12 (n=34)	0 (0.0%)
Day 14 (n=30)	1 (3.3%)
Day 16 (n=23)	1 (4.3%)
Day 18 (n=19)	1 (5.3%)
Day 20 (n=14)	0 (0.0%)

Table 4 Kaplan-Meier Survival estimates of time to TRSI development for categorical variables and cox regression estimates for continuous variables

Variable	Number			Median survival (days) (95% CI)	p-value
	Total Number	of Events	Number Censored		
Gender					
Male	66	15	51	NA	0.57
Female	36	8	28	NA	
BMI					
Underweight & Normal (BMI <25)	38	12	26	14 (10.61 - 17.39)	0.25
Overweight (BMI 25 - 30)	37	5	32	NA	
Obese (BMI >30)	27	6	21	NA	
APACHE II ^	102	23	79	0.95 (0.89 - 1.01) ^	0.08
APACHE III					
Non-surgical	16	6	10	14.0 (8.4-19.6)	0.72
Surgical	86	17	69	NA	
No. Comorbidities					
None	32	7	25	20.0 (5.7 - 34.3)	0.89
One	26	5	21	14.0 (10.0 - 18.0)	
Two or more	44	11	33	NA	
Vasopressors prior to or at insertion*					
No	55	12	43	NA	0.70
Yes	47	11	3	14 (NA)	
Steroid prior to or at insertion					
No	89	21	68	20 (NA)	0.64
Yes	13	2	11	NA	
Tracheostomy insertion method					
Percutaneous	74	18	56	20 (NA)	0.49
Surgical	28	5	23	NA	
Tube size (n=101)					
7 & 7.5	21	5	16	20.0 (11.8 – 28.2)	0.94
8 & 9	80	18	62	NA	
Tube Type (n=101)					
Adjustable flange tubes	14	0	14	NA	0.023
Non-adjustable flange tubes	87	23	64	14.0 (7.2 - 20.8)	
Other PI prior to Insertion					
No	82	18	64	20 (NA)	0.67
Yes	20	5	15	NA	
Other PI: Mucosal					
No	95	22	73	20 (NA)	0.51
Yes	7	1	6	NA	
Other PI: Skin					
No	85	18	67	NA	0.93
Yes	17	5	12	14 (NA)	
Mechanical ventilation time, hours	102	23	79	0.999 (0.997 - 1.001) ^	0.24

Greatest suctioning frequency					0.47
< hourly	13	4	9	20 (NA)	
1-2 hourly	71	17	54	14 (NA)	
2-3 hourly	18	2	16	NA	

^Cox proportional regression: hazard ratio estimate (95% CI) and p-value provided

* Vasopressors: Includes vasopressin, adrenaline and noradrenaline

NA (Not applicable) – insufficient events to estimate median and/or 95% CI