



**Queensland University of Technology**  
Brisbane Australia

This may be the author's version of a work that was submitted/accepted for publication in the following source:

[Lim, Su](#), Ong, Kian, Chan, Yiong Huak, Loke, Wai-Chiong, [Ferguson, Maree](#), & [Daniels, Lynne](#)

(2012)

Malnutrition and its impact on cost of hospitalization, length of stay, readmission and 3-year mortality.

*Clinical Nutrition*, 31(3), pp. 345-350.

This file was downloaded from: <https://eprints.qut.edu.au/50643/>

**© Consult author(s) regarding copyright matters**

This work is covered by copyright. Unless the document is being made available under a Creative Commons Licence, you must assume that re-use is limited to personal use and that permission from the copyright owner must be obtained for all other uses. If the document is available under a Creative Commons License (or other specified license) then refer to the Licence for details of permitted re-use. It is a condition of access that users recognise and abide by the legal requirements associated with these rights. If you believe that this work infringes copyright please provide details by email to [qut.copyright@qut.edu.au](mailto:qut.copyright@qut.edu.au)

**License:** Creative Commons: Attribution-Noncommercial-No Derivative Works 2.5

**Notice:** *Please note that this document may not be the Version of Record (i.e. published version) of the work. Author manuscript versions (as Submitted for peer review or as Accepted for publication after peer review) can be identified by an absence of publisher branding and/or typeset appearance. If there is any doubt, please refer to the published source.*

<https://doi.org/10.1016/j.clnu.2011.11.001>



This is the author version published as:

[Lim, Su Lin](#), Ong, Kian Chung Benjamin, Chan, Yiong Huak, Loke, Wai Chiong, Ferguson, Maree, & [Daniels, Lynne](#) (2011) Malnutrition and its impact on cost of hospitalization, length of stay, readmission and 3-year mortality. *Clinical Nutrition*, 31(3), pp. 345-350.

**Background & aims:** The confounding effect of disease on the outcomes of malnutrition using diagnosis-related groups (DRG) has never been studied in a multidisciplinary setting. This study aims to determine the prevalence of malnutrition in a tertiary hospital in Singapore and its impact on hospitalization outcomes and costs, controlling for DRG.

**Methods:** This prospective cohort study included a matched case control study. Subjective Global Assessment was used to assess the nutritional status on admission of 818 adults. Hospitalization outcomes over 3 years were adjusted for gender, age, ethnicity, and matched for DRG.

**Results:** Malnourished patients (29%) had longer hospital stays ( $6.9 \pm 7.3$  days vs.  $4.6 \pm 5.6$  days,  $p < 0.001$ ) and were more likely to be readmitted within 15 days (adjusted

## **Malnutrition and its impact on cost of hospitalization, length of stay, readmission and 3-year mortality**

Su Lin Lim<sup>1,6,7</sup>, Kian Chung Benjamin Ong<sup>2</sup>, Yiong Huak Chan<sup>3</sup>, Wai Chiong Loke<sup>4</sup>, Maree Ferguson<sup>5,7</sup>, Lynne Daniels<sup>6,7</sup>

<sup>1</sup>*Dietetics Department, National University Hospital, Singapore,* <sup>2</sup>*Department of Medicine, National University Hospital, Singapore,* <sup>3</sup>*Biostatistics Unit, Yong Loo Lin School of Medicine, National University Health System, Singapore,* <sup>4</sup>*Health & Wellness Programme Office, Ministry of Health, Singapore,* <sup>5</sup>*Nutrition & Dietetics, Princess Alexandra Hospital, Australia,* <sup>6</sup>*Institute Health Biomedical Innovation and* <sup>7</sup>*School of Public Health, Queensland University of Technology, Australia*

### **Corresponding author**

Su Lin Lim

Dietetics Department, National University Hospital, 5 Lower Kent Ridge Road, Main Building, Level 1, Singapore 119074

Tel: (65) 67724580

Fax: (65) 67791938

Email: su\_lin\_lim@nuhs.edu.sg

### **ABSTRACT**

**Background & aims:** The confounding effect of disease on the outcomes of malnutrition using diagnosis-related groups (DRG) has never been studied in a multidisciplinary setting. This study aims to determine the prevalence of malnutrition in a tertiary hospital in Singapore and its impact on hospitalization outcomes and costs, controlling for DRG.

**Methods:** This prospective cohort study included a matched case control study. Subjective Global Assessment was used to assess the nutritional status on admission of 818 adults. Hospitalization outcomes over 3 years were adjusted for gender, age, ethnicity, and matched for DRG.

**Results:** Malnourished patients (29%) had longer hospital stays ( $6.9 \pm 7.3$  days vs.  $4.6 \pm 5.6$  days,  $p < 0.001$ ) and were more likely to be readmitted within 15 days (adjusted relative risk = 1.9, 95% CI 1.1–3.2,  $p = 0.025$ ). Within a DRG, the mean difference between actual cost of hospitalization and the average cost for malnourished patients was greater than well-nourished patients ( $p = 0.014$ ). Mortality was higher in malnourished patients at 1 year (34% vs. 4.1%), 2 years (42.6% vs. 6.7%) and 3 years (48.5% vs. 9.9%);  $p < 0.001$  for all. Overall, malnutrition was a significant predictor of mortality (adjusted hazard ratio = 4.4, 95% CI 3.3–6.0,  $p < 0.001$ ).

**Conclusions:** Malnutrition was evident in up to one third of the inpatients and led to poor hospitalization outcomes and survival as well as increased costs of care, even after matching for DRG. Strategies to prevent and treat malnutrition in the hospital and post-discharge are needed.

### **Keywords:**

Malnutrition; Hospitalization outcomes; Mortality; Cost; Subjective Global Assessment; Prevalence

## 1. Introduction

Malnutrition is prevalent in the hospital setting with 20-50% of patients identified as malnourished at admission.<sup>1,2</sup> Poor nutrition has been adversely associated with a range of clinical, functional and economic outcomes.<sup>1,3,4</sup> Malnourished patients have been shown to have a length of hospital stay 1.5-1.7 times longer than well-nourished patients.<sup>3,4</sup> They have also been shown to have a three-fold increase in mortality over a 12 month period post discharge.<sup>3</sup>

The prevalence of inpatient malnutrition and its related outcomes are likely to vary with different populations and health care settings. Yet there are few studies reporting prevalence of malnutrition in Asian hospitals and these have largely focused on older adults.<sup>5-7</sup> The true prevalence of malnutrition in a Singapore acute-care hospital setting has not been clearly established. A previous study done in a large acute-care hospital in Singapore, found the “prevalence” to be 15% using Subjective Global Assessment (SGA).<sup>8</sup> However, this figure is likely to be an underestimate as only patients screened to be at risk of malnutrition using the Malnutrition Screening Tool<sup>9</sup> were assessed using SGA. Furthermore, patients were selected from four discipline-specific wards and hence may not be representative of all hospital patients.

Few studies have prospectively examined the long term clinical outcomes of malnutrition<sup>3</sup> and consideration of the confounding effect of disease or diagnosis-related groups (DRG) is rare.<sup>10</sup> Even fewer studies have investigated mortality outcomes using data from national death registers.<sup>3</sup> Furthermore, most studies evaluating the prognostic significance of malnutrition have focused on Caucasian populations, whilst studies in Asian populations are scarce.<sup>1,3,4</sup>

The aim of this study was to comprehensively determine the prevalence of malnutrition and its impact on length of hospital stay, readmission, 3-year mortality and cost of hospitalization in patients newly admitted to an acute-care tertiary hospital in Singapore, across different DRG.

## 2. Methods

### 2.1. Study participants and study design

The study participants were patients newly admitted to National University Hospital (NUH), which is a 987-bed acute tertiary hospital, with a comprehensive range of medical and surgical specialties. Its catchment includes the western region of Singapore as well as complicated clinical cases that require specialist tertiary care from all over the country. To ensure that study subjects were as representative of the institution's patient profile as possible, consecutive patients newly admitted to a pre-determined sequence of 16 wards were screened for eligibility from February to November 2006. Patients were included in the study if they were aged 18 to 74 years old and had not been enrolled in the study during previous admissions. Pediatric patients were excluded because nutrition assessment methods differ between adults and children. Psychiatric, Intensive Care Unit and maternity patients were excluded at the hospital's request. Based on a predetermined fixed sequence of wards, we assessed all newly admitted eligible patients to a maximum of six patients per day. Once all 16 wards had been covered, the sequence was repeated. This recruitment strategy enabled consecutive sampling within a feasible target of five to six consents and assessments per day. Demographics of the study sample were compared with all patients admitted over the period of the study, except those in the excluded categories. Data on hospital population were retrieved from the hospital's Management Information Services.

### 2.2. Nutritional assessment

To avoid inter-rater variability, a single dietitian assessed the nutritional status using SGA within 48 hours of admission.<sup>11</sup> Subjective Global Assessment is a validated and widely used nutrition assessment tool which involves evaluation of weight and dietary intake changes, gastrointestinal symptoms, functional capacity and physical examination for evidence of fat depletion, muscle wasting and nutrition-related edema.<sup>11</sup> The SGA classifies patients into three categories; well nourished, moderately malnourished and severely malnourished.<sup>11</sup> It was chosen as the assessment tool for this study because of its good prognostic value for a range of clinical outcomes, including mortality.<sup>3,4,12</sup>

### 2.3. Hospitalization outcomes and mortality data

Each patient was prospectively tracked for the length of hospital stay (LOS), cost of hospital stay before government subsidy, inpatient mortality and unplanned readmission within 15 days, 90 days and 6 months from the discharge date of the index admission. Index admission refers to the admission in which the participants were recruited for this study. Patients' LOS were tracked via the hospital's electronic medical records (Computerized Patient Support System). Patients' readmission to the hospital, inpatient mortality and actual cost of hospital stay for each study subject were tracked from the hospital's System Application Product (SAP) system. Actual hospitalization cost for each participant was the cost incurred before government subsidy and includes

hospital stay, professional fees, medications, tests and ward consumables. Patient mortality at 1, 2 and 3 years from the index admission were retrospectively tracked from the Singapore Death Registry through the Singapore Ministry of Health. The National Healthcare Group Domain Specific Review Board approved this study and a member of the Singapore Ministry of Health staff had permission to access the Singapore Death Registry for this study. The Ministry of Health staff was provided with a password-protected complete study dataset. The mortality data for each patient was added and returned as a de-identified dataset to the principal investigator.

To ascertain the effect of malnutrition on LOS and cost compared to well-nourished patients who had similar disease type and severity, participants' DRG were obtained retrospectively from the hospital's Casemix Department.<sup>13</sup> Each DRG has a specific numerical code as assigned by the Australian National Diagnosis Related Groups.<sup>13</sup> The DRG is a system widely used by many countries to cluster patients with a variety of diagnoses and procedures into diagnostic groups on the basis that cases within a group will have a similar level of complexity and their treatment is expected to utilise a similar level of hospital resources and hence incur similar costs.<sup>14</sup> They are used as a basis for hospital funding allocation.<sup>14</sup> Participants who had been classified with a malnutrition sub-component in the DRG were reclassified with the corresponding DRG without malnutrition so that matching between similar codes of DRG can be performed in the statistical analysis.<sup>13</sup> The length of hospital stay and cost of hospitalization for each participant were compared with the Singapore public hospital and study hospital expected average LOS and cost specific to the DRG.<sup>15</sup> These two approaches effectively control for the potential confounding effects of the type and severity of illness on the hospitalization outcomes and cost.

#### *2.4. Statistical analyses*

All statistical analyses were performed using the Statistical Package for the Social Sciences for Windows (version 18.0, SPSS Inc., Chicago, IL, USA). Descriptive data for quantitative variables (LOS and cost) were presented as median and mean  $\pm$  standard deviation (SD), and categorical variables (readmission and mortality) were presented as n (%). Differences in LOS and hospitalization costs between well-nourished and malnourished groups were evaluated using mixed model analysis with DRG as a random effect to handle correlated effects, adjusted for age, gender and race. Conditional logistic regression matching by DRG (matched case-control design) was carried out to evaluate the association between nutritional status and outcomes variables (mortality and readmission), adjusting for gender, age and race, presenting relative risk with 95% confidence interval.

### 3. Results

#### 3.1. Demographics of participants

A total of 1079 patients fulfilled the inclusion criteria and were eligible to participate in the study. From these, 818 (76%) patients participated in the study, 11 declined to participate and 250 were discharged within 48 hours of admission before SGA could be completed. The demographic profiles of the participants and of the hospital population are described in Table 1. The study sample was older than the hospital population (difference = 2.6 years, CI 1.48-3.58) but there was no difference in gender or race.

**TABLE 1. Demographics (frequency or mean  $\pm$  standard deviation) of study participants and hospital population<sup>a</sup>**

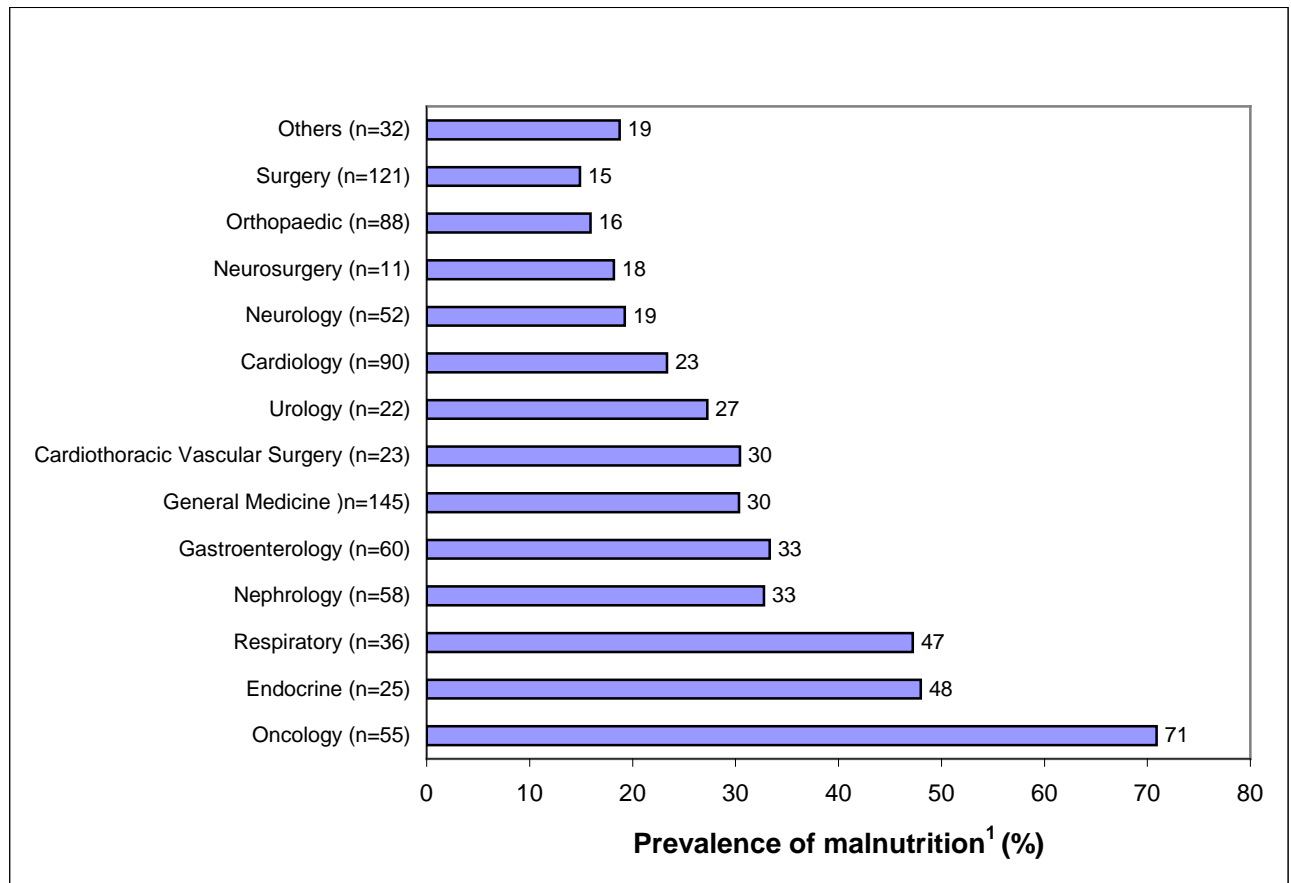
		Study sample (n=818)	Hospital population <sup>1</sup> (n= 21348)	p-value
<b>Gender</b>	Male	59%	56%	0.24
	Female	41%	44%	
<b>Race</b>	Chinese	62%	60%	0.05
	Malay	20%	18%	
	Indian	11%	13%	
	Others	7%	9%	
<b>Age</b>	Mean age (years)	51.9 $\pm$ 15.4	49.3 $\pm$ 15.9	<0.001

<sup>a</sup>Profile of inpatient admissions from National University Hospital's Management Information Services, matched for study data collection period (February-November 2006) and study selection criteria (i.e. 18 to 74 years old not admitted to pediatrics, psychiatry, intensive care and maternity units).

#### 3.2. Prevalence of malnutrition

Using SGA, 71% (583) patients were classified as well nourished, 25% (205) as moderately malnourished and 4% (30) as severely malnourished. The moderately and severely malnourished categories have been combined for subsequent analysis. The highest prevalence of malnutrition was found in patients from oncology (71%), endocrinology (48%) and respiratory medicine (47%) (Figure 1). Malnourished patients were older (58 years vs. 49 years,  $p < 0.001$ , 95% CI 7-11) and more likely to be male (32% vs. 26%,  $p = 0.016$ ). On this basis, both age and gender were included in all statistical models. There was no difference in the prevalence of malnutrition among different races (Chinese 32%, Malay 25%, Indian 22%, Other ethnic 20%;  $p = 0.08$ ).

Figure 1. Prevalence of malnutrition by specialties (n=818).



<sup>1</sup>Malnutrition was determined with Subjective Global Assessment within 48 hours of hospital admission.

### 3.3. Hospitalization outcomes, cost and mortality

Table 2 compares hospitalization outcomes, costs and mortality between well-nourished and malnourished patients. Independent of gender, age, race and matching for DRG, malnourished patients stayed in the hospital significantly longer, were more likely to be readmitted within 15 days, and had higher mortality up to three years post discharge. Table 2 also shows the length of stay and cost of hospitalization and comparison of these variables with the average for NUH and Singapore. Forty-five percent of malnourished patients were hospitalized longer than that recommended under the DRG for public hospitals compared to 21% for well-nourished patients. Malnutrition was a significant predictor of overall mortality with adjusted hazard ratio (HR) of 4.4, (95% CI 3.3-6.0),  $p < 0.001$  (Figure 2). Out of the 235 patients that were identified as malnourished in this study, only three had been classified under the DRG co-morbidity as malnourished.

There were 530 patients (343 well nourished and 187 malnourished) that could be matched for 95 DRG, with each DRG having at least a well-nourished and a malnourished case (range of n values within each DRG = 2 – 22). Conditional logistic regression was used to effectively average out the association between nutritional status



and outcomes variables within each DRG cluster across the whole cohort, and the results presented in Table 2.

**TABLE 2**

Comparison of hospitalization outcomes, costs and mortality between well-nourished and malnourished patients (n=818).

Outcome variables	Well-nourished (n=583)	Malnourished <sup>a</sup> (n=235)	Results, unadjusted	Results, adjusted <sup>b</sup>	Results, DRG matched <sup>c</sup>	Results, DRG matched, adjusted <sup>c,d</sup>
Length of hospital stay (days), mean ± sd	4.6 ± 5.6	6.9 ± 7.3	<i>P</i> < 0.001	<i>P</i> = 0.001	<i>P</i> < 0.001	<i>P</i> = 0.001
Length of hospital stay (days), median (range)	3 (1-63)	4 (1-59)				
Readmission within 15 days of index admission, n (%)	61 (10.5)	40 (17.0)	RR: 1.6 (CI: 1.1, 2.3) <i>P</i> = 0.013	RR: 1.6 (CI: 1.0, 2.4) <i>P</i> = 0.040	RR: 1.8 (CI: 1.0, 3.0) <i>P</i> = 0.035	RR: 1.9 (CI: 1.1, 3.2) <i>P</i> = 0.025
Readmission within 90 days of index admission, n (%)	133 (22.8)	87 (37.0)	RR: 1.6 (CI: 1.3, 2.0) <i>P</i> < 0.001	RR: 1.5 (CI: 1.1, 1.9) <i>P</i> = 0.010	RR: 1.4 (CI: 1.0, 1.9) <i>P</i> = 0.081	RR: 1.4 (CI: 0.9, 2.0) <i>P</i> = 0.101
Readmission within 6 months of index admission, n (%)	187 (32.1)	113 (48.1)	RR: 1.5 (CI: 1.2, 1.9) <i>P</i> < 0.001	RR: 1.3 (CI: 1.0-1.7) <i>P</i> = 0.036	RR: 1.3 (CI: 1.0, 1.8) <i>P</i> = 0.067	RR: 1.3 (CI: 1.0, 1.8) <i>P</i> = 0.097
Inpatient mortality, n (%)	2 (0.3)	10 (4.3)	RR: 12.3 (CI: 2.7, 55.5) <i>P</i> < 0.001	RR: 12.0 (CI: 2.5 – 59.0) <i>P</i> = 0.002	RR: 7.0 (CI: 0.8, 62.7) <i>P</i> = 0.081	RR: 3.9 (CI: 0.3, 45.5) <i>P</i> = 0.271
1-year mortality, cumulative, n (%)	24 (4.1)	80 (34.0)	RR=8.3 (CI: 5.4, 12.6) <i>P</i> < 0.001	RR: 7.4 (CI: 4.6 – 11.9) <i>P</i> < 0.001	RR: 4.2 (CI: 2.3, 7.6) <i>P</i> < 0.001	RR: 4.4 (CI: 2.3, 8.3) <i>P</i> < 0.001
2-year mortality, cumulative, n (%)	39 (6.7)	100 (42.6)	RR: 6.3 (CI: 4.5, 8.9) <i>P</i> < 0.001	RR: 5.2 (CI: 3.6 – 7.7) <i>P</i> < 0.001	RR: 3.3 (CI: 2.1, 5.3) <i>P</i> < 0.001	RR: 3.2 (CI: 1.9, 5.3) <i>P</i> < 0.001
3-year mortality, cumulative, n (%)	58 (9.9)	114 (48.5)	RR: 4.8 (CI: 3.7, 6.5) <i>P</i> < 0.001	RR: 3.9 (CI: 2.8 – 5.4) <i>P</i> < 0.001	RR: 2.9 (CI: 1.9, 4.3) <i>P</i> < 0.001	RR: 2.8 (CI: 1.8, 4.4) <i>P</i> < 0.001
Cost of hospitalization for individual patient (S\$), mean ± sd	3707 ± 5541	4606 ± 6665	<i>P</i> = 0.049	<i>P</i> = 0.085	<i>P</i> = 0.037	<i>P</i> = 0.070
Cost of hospitalization for individual patient (S\$), median (range)	1897 (179-70472)	2534 (297– 50215)				
Difference between study subjects length of hospital stay and NUH's similar diagnosis-related group (DRG) average length of stay (days), mean difference ± sd	0.1 ± 4.3	1.5 ± 6.9	<i>P</i> = 0.001	<i>P</i> = 0.002	<i>P</i> < 0.001	<i>P</i> = 0.001
Difference between study participant length of hospital stay and all Singapore public hospitals' similar diagnosis-related group (DRG) average length of stay (days), mean difference ± sd	-0.5 ± 4.5	0.7 ± 7.0	<i>P</i> = 0.004	<i>P</i> = 0.006	<i>P</i> = 0.001	<i>P</i> = 0.003
Difference between study participants actual cost of hospitalization and NUH's similar diagnosis-related group (DRG) average cost of hospitalization (S\$), mean difference ± sd	488 ± 3494	1392 ± 6150	<i>P</i> = 0.008	<i>P</i> = 0.013	<i>P</i> = 0.009	<i>P</i> = 0.014

DRG = diagnosis-related group; sd = standard deviation; n = number; RR = relative risk; CI = 95% Confidence Intervals; S\$ = Singapore dollars; NUH = National University Hospital.

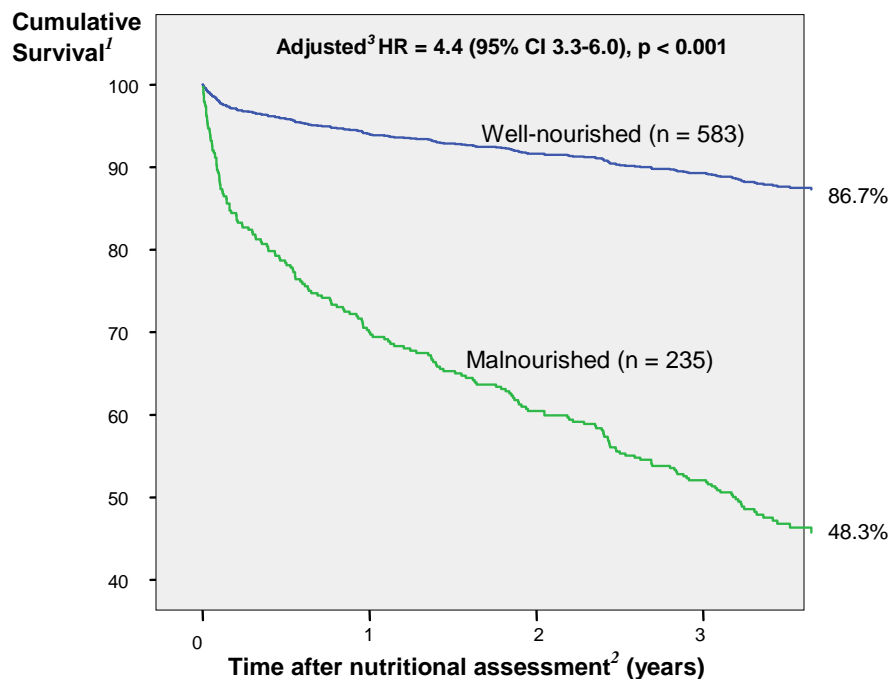
<sup>a</sup> Malnutrition as defined by Subjective Global Assessment. Moderate and severe malnutrition are combined.

<sup>b</sup> Adjusted for ethnicity, age, gender.

<sup>c</sup> Only 530 subjects could be matched for 95 DRGs.

<sup>d</sup> Adjusted for ethnicity, age, gender and matching for diagnosis-related group (DRG).

Figure 2. Cumulative survival in well-nourished and malnourished patients (n= 818). HR = Hazard ratio.



<sup>1</sup>Survival and mortality data from Singapore Death Registry.

<sup>2</sup>Assessment with Subjective Global Assessment within 48 hours of hospital admission.

<sup>3</sup>Adjusted for ethnicity, age and gender.

#### 4. Discussion

This study is amongst the first to examine the impact of malnutrition on length of hospital stay, readmission, hospitalization cost and mortality in a large sample representative of patients admitted to a major Singaporean tertiary hospital. In addition, few studies have controlled for the confounding effect of diagnosis on malnutrition outcomes or used national death register data to determine mortality outcomes. After controlling for the potential confounders of age, gender, ethnicity and DRG, we found that malnourished patients stayed in hospital on average two days longer and were almost twice as likely as well-nourished patients to be readmitted within 15 days of discharge. Malnutrition posed almost a four-fold and three-fold increase in risk of death at 1-year and 3-year follow-up, respectively.

Although previous studies have shown a prospective association between malnutrition and clinical outcomes, the confounding effect of disease and its complexity have seldom been taken into consideration.<sup>3,16</sup> It is widely agreed that disease and malnutrition are closely linked<sup>17</sup> and that disease may cause secondary malnutrition and vice-versa.<sup>18</sup> However, it is often argued that LOS, mortality and hospitalization costs are primarily determined by the patient's medical condition, and any association with malnutrition is due to confounding.<sup>19</sup> For example, an oncology case may not live as long

as a non-cancer case, regardless of nutritional status. Hence, in this study we accounted for the disease by firstly comparing the LOS and hospitalization cost of our participants with the average LOS and hospitalization cost for patients with similar DRG from within the hospital and with national average; and secondly by matching the DRG in a case-control design. As each DRG describes a cluster of patients with related diagnoses requiring similar investigations and incurring similar treatment costs, by matching by the DRG, we were able to show that malnutrition was indeed an independent predictor of length of hospital stay, readmission, hospitalization cost and mortality. The change in RR for the majority of outcomes seen after matching for DRG indicates that our approach has reduced confounding related to diagnosis and severity of illness. The very substantial changes in RR for mortality after matching confirm that, as is commonly claimed, some of the association between malnutrition and mortality is secondary to the underlying effect of disease.<sup>18</sup> However, our results also show that there remains a three to four fold increase in risk, independent of underlying disease, across a wide range of DRG and independent of age and gender. The increase in *p* values reflects the smaller sample size available for the matched conditional regression analysis.

The current study found that malnourished patients stayed 1.5 times longer than well-nourished patients. Higher LOS in malnourished patients has been reported elsewhere.<sup>3,4</sup> In an Australian study of 819 patients in two teaching hospitals, malnutrition was also associated with 1.5 times longer LOS compared to well-nourished patients.<sup>3</sup>

The average cost of hospitalization was 24% higher for malnourished patients in this study. The effect of malnutrition on hospitalization cost was statistically significant when DRG was matched in the analysis. However the effect was not sustained when the results were further adjusted for ethnicity, age and gender. When the cost of hospitalization for each participant was compared with the hospital's average cost specific to the individual patient's DRG, the average cost difference for malnourished patients was three times higher than well-nourished patients. This means that malnourished patients incur higher hospital costs over and above those associated with their underlying illness. This echoes previous studies which linked malnutrition with higher hospitalization costs,<sup>16</sup> which are indirectly attributed to longer hospital stay,<sup>4,20</sup> increased use of hospital resources,<sup>4</sup> higher rate of re-admissions,<sup>20</sup> increased infection<sup>21</sup> or pressure ulcer and poor wound healing.<sup>22</sup> In a study by Correia *et al* (2003), a malnourished patient incurred 61% increase in cost of hospitalization after controlling for the risk factors of cancer, infection, age above 60 years old and those undergoing clinical treatment.<sup>4</sup>

Our study found a 60% increase risk in readmissions within 15 days for malnourished patients when compared to well-nourished patients. However at 90 days and six months, even though there was statistical significance when readmissions were controlled for age, gender and ethnicity, the effect disappeared after matching for DRG. Planas *et al* (2004) showed that malnourished patients were more one and half times more likely to be readmitted within 6 months of discharge from the hospital but the results were not controlled for any confounders.<sup>20</sup>

Only 10 % of well-nourished patients died in the three years post discharge compared to almost 50% of those who were malnourished. We found the relative risk of death for malnourished patients to be more than thrice that of well-nourished patients at 1-year and 2-year after being discharged from the hospital even after adjusting for confounders and matching for DRG. To the authors' knowledge, this is the only study that tracked the mortality of hospitalized patients for 3 years post-discharge using national death registry data and matching for DRG. A similar study that used national registry data found that the incidence of mortality in malnourished patients at 1 year was 30%, but did not control for confounders.<sup>3</sup> Other studies that associated malnutrition with long-term mortality have been mainly conducted on elderly participants.<sup>23-25</sup>

Given only 3/235 malnourished patients were coded as such in the DRG, it is evident that the majority of malnourished patients in our institution were either not recognized, or not accurately documented and coded for DRG. This scenario was also observed in Australia and Spain whereby only less than 2% of inpatients were coded as malnourished<sup>26,27</sup> in contrast to many studies reporting the prevalence of malnutrition in the hospitals to be more than 30%.<sup>1</sup> Accurate diagnosis and coding for malnutrition could potentially change the patient's DRG to one with a higher weighting and expected LOS, which would then correctly reflect the resources that the hospital spends on these patients, and in some countries would increase the amount of reimbursement the hospital received.<sup>28-30</sup>

The merits of this study are the large sample size recruited from a sequential sample, and the prospective tracking of hospitalization outcomes, including a 3-year national-record based mortality. Although several studies have used DRG data, none has used matching of cases to compare the hospitalization outcomes and cost between malnourished and well-nourished patients.<sup>10,30,31</sup> The study sample was representative of the hospital's admission profile (based on the study selection criteria and period) for gender and race but not for age. However, the difference of 2.6 years in age though statistically significant, is unlikely to be clinically significant or impact on the results. As this study was not able to monitor patients readmitted to other hospitals, readmission rates might be underestimated. However the likelihood of readmission to other hospitals is low because most patients prefer to come back to the hospital in their area, where their medical records are held and they attend post-discharge outpatient clinics. In addition, it is the national policy in Singapore for public ambulance to take emergency patients to the hospitals nearest to their home.

A limitation of this study is that we do not have the data on the number of study patients referred for treatment of malnutrition or the outcome of that treatment. At the time of this study (2006), access to inpatient dietetic services for assessment and treatment of malnutrition was solely through medical referral. Consequently, as was common in many hospitals at that time, it is likely that a substantial proportion of malnutrition risk was unrecognized and untreated.<sup>32,33</sup> In addition, outpatient resources to support malnourished patients were very limited. Indeed, providing an evidence-base to address these issues was a primary motivation for the study. It is possible that in a proportion of patients, nutrition status improved during or subsequent to their admission.

However, such improvement is likely to have occurred in a small number of patients and would tend to attenuate associations between nutrition status at admission and clinical outcomes. Subsequent to this study, a comprehensive nutrition screening protocol and on-line dietetic referral system have been successfully implemented.<sup>34</sup>

## **5. Conclusions**

Malnutrition is evident in up to one third of the patients admitted to a Singapore tertiary hospital and leads to substantial increases in length of hospital stay, readmission rate, mortality and hospitalization cost when compared with well-nourished patients of similar diagnosis. As such, this study provides clear evidence that the adverse outcomes of malnutrition are not just a consequence of the disease process. Given the prevalence of malnutrition and its poor short and longer term outcomes, strategies are required to systematically identify and effectively prevent and treat malnutrition in the community, hospital and post-discharge. The effect of nutritional intervention in specialties with high prevalence of malnutrition and continuing care for malnourished patients in the community merits study.

## **Statement of authorship**

SLL conceptualized, designed and conducted the study, interpreted the data and wrote the manuscript. KCBO, WCL and MF provided significant advice on the design of the study and assisted in writing the manuscript. YHC performed statistical analysis and interpreted the data. LD interpreted the data, provided significant advice on the design of the study and assisted in writing the manuscript. All authors have made substantial contributions and approved the final manuscript.

## **Conflict of interest**

None of the authors had any conflict of interest related to the authorship of the submitted paper.

## **Acknowledgements**

The recruitment phase of this study was supported by the National Healthcare Group Small Innovative Grant (NHG-SIG). We thank Ms Tan Ai Vee (Singapore Ministry of Health), Ms Cherie Tong (National University Hospital) and Ms Serene Wong (National University Hospital) for contributing part of the data collection and Dr Marilyn Banks (Royal Brisbane & Women's Hospital) for her advice on DRG. We also thank Mr Dennie Hsu from National University Hospital for his unwavering support for this study.

**REFERENCES**

1. Norman K, Pichard C, Lochs H, Pirlich M. Prognostic impact of disease-related malnutrition. *Clin Nutr* 2008;27(1):5-15.
2. McWhirter JP, Pennington CR. Incidence and recognition of malnutrition in hospital. *BMJ* 1994;308(6934):945-8.
3. Middleton MH, Nazarenko G, Nivison-Smith I, Smerdely P. Prevalence of malnutrition and 12-month incidence of mortality in two Sydney teaching hospitals. *Intern Med J* 2001;31(8):455-61.
4. Correia MI, Waitzberg DL. The impact of malnutrition on morbidity, mortality, length of hospital stay and costs evaluated through a multivariate model analysis. *Clin Nutr* 2003;22(3):235-9.
5. Tsai AC, Ho CS, Chang MC. Assessing the prevalence of malnutrition with the Mini Nutritional Assessment (MNA) in a nationally representative sample of elderly Taiwanese. *J Nutr Health Aging* 2008;12(4):239-43.
6. Vedantam A, Subramanian V, Rao NV, John KR. Malnutrition in free-living elderly in rural south India: prevalence and risk factors. *Public Health Nutr* 2010;13(9):1328-32.
7. Saka B, Kaya O, Ozturk GB, Erten N, Karan MA. Malnutrition in the elderly and its relationship with other geriatric syndromes. *Clin Nutr* 2010;29(6):745-8.
8. Raja R, Lim AV, Lim YP, Lim G, Chan SP, Vu CK. Malnutrition screening in hospitalised patients and its implication on reimbursement. *Intern Med J* 2004;34(4):176-81.
9. Ferguson M, Capra S, Bauer J, Banks M. Development of a valid and reliable malnutrition screening tool for adult acute hospital patients. *Nutrition* 1999;15(6):458-64.
10. Robinson G, Goldstein M, Levine GM. Impact of nutritional status on DRG length of stay. *JPEN J Parenter Enteral Nutr* 1987;11(1):49-51.
11. Detsky AS, McLaughlin JR, Baker JP, Johnston N, Whittaker S, Mendelson RA, et al. What is subjective global assessment of nutritional status? *JPEN J Parenter Enteral Nutr* 1987;11(1):8-13.
12. Gupta D, Lammersfeld CA, Vashi PG, Burrows J, Lis CG, Grutsch JF. Prognostic significance of Subjective Global Assessment (SGA) in advanced colorectal cancer. *Eur J Clin Nutr* 2005;59(1):35-40.
13. Commonwealth Department of Health and Family Services and 3M Health Information Systems. *Australian National Diagnosis Related Groups (AN-DRGs) Version 3.1, Definitions Manual, Vol 1, 3M Australia Pty Limited and Commonwealth of Australia, 1996.*
14. Thompson JD. DRG prepayment: its purpose and performance. *Bull N Y Acad Med* 1988;64(1):28-51.
15. Ministry of Health Singapore. *Casemix Activity Report 2002.*
16. Chima CS, Barco K, Dewitt ML, Maeda M, Teran JC, Mullen KD. Relationship of nutritional status to length of stay, hospital costs, and discharge status of patients hospitalized in the medicine service. *J Am Diet Assoc* 1997;97(9):975-8.

17. Pirlich M, Schutz T, Kemps M, Luhman N, Burmester GR, Baumann G, et al. Prevalence of malnutrition in hospitalized medical patients: impact of underlying disease. *Dig Dis* 2003;21(3):245-51.
18. Jeejeebhoy KN. Nutritional assessment. *Nutrition* 2000;16(7-8):585-90.
19. Elia M. Nutrition and health economics. *Nutrition* 2006;22(5):576-8.
20. Planas M, Audivert S, Perez-Portabella C, Burgos R, Puiggros C, Casanelles JM, et al. Nutritional status among adult patients admitted to an university-affiliated hospital in Spain at the time of genoma. *Clin Nutr* 2004;23(5):1016-24.
21. Rypkema G, Adang E, Dicke H, Naber T, de Swart B, Disselhorst L, et al. Cost-effectiveness of an interdisciplinary intervention in geriatric inpatients to prevent malnutrition. *J Nutr Health Aging* 2004;8(2):122-7.
22. Banks MD, Graves N, Bauer JD, Ash S. The costs arising from pressure ulcers attributable to malnutrition. *Clin Nutr* 2009;29(2):180-6.
23. Sullivan DH, Walls RC. Protein-energy undernutrition and the risk of mortality within six years of hospital discharge. *J Am Coll Nutr* 1998;17(6):571-8.
24. Cereda E, Zagami A, Vanotti A, Piffer S, Pedrolli C. Geriatric Nutritional Risk Index and overall-cause mortality prediction in institutionalised elderly: a 3-year survival analysis. *Clin Nutr* 2008;27(5):717-23.
25. Miller MD, Crotty M, Giles LC, Bannerman E, Whitehead C, Cobiac L, et al. Corrected arm muscle area: an independent predictor of long-term mortality in community-dwelling older adults? *J Am Geriatr Soc* 2002;50(7):1272-7.
26. Marco J, Barba R, Zapatero A, Matia P, Plaza S, Losa JE, et al. Prevalence of the notification of malnutrition in the departments of internal medicine and its prognostic implications. *Clin Nutr (Epub ahead of print 9 February 2011)*, doi:10.1016/j.clnu.2010.12.005.
27. Rowell DS, Jackson TJ. Additional costs of inpatient malnutrition, Victoria, Australia, 2003-2004. *Eur J Health Econ* 2011;12(4):353-61.
28. Funk KL, Ayton CM. Improving malnutrition documentation enhances reimbursement. *J Am Diet Assoc* 1995;95(4):468-75.
29. Delhey DM, Anderson EJ, Laramie SH. Implications of malnutrition and diagnosis-related groups (DRGs). *J Am Diet Assoc* 1989;89(10):1448-51.
30. Amaral TF, Matos LC, Tavares MM, Subtil A, Martins R, Nazare M, et al. The economic impact of disease-related malnutrition at hospital admission. *Clin Nutr* 2007;26(6):778-84.
31. Ockenga J, Freudenreich M, Zakonsky R, Norman K, Pirlich M, Lochs H. Nutritional assessment and management in hospitalised patients: implication for DRG-based reimbursement and health care quality. *Clin Nutr* 2005;24(6):913-9.
32. Bavelaar JW, Otter CD, van Bodegraven AA, Thijs A, van Bokhorst-de van der Schueren MA. Diagnosis and treatment of (disease-related) in-hospital malnutrition: the performance of medical and nursing staff. *Clin Nutr* 2008;27(3):431-8.
33. Lamb CA, Parr J, Lamb EI, Warren MD. Adult malnutrition screening, prevalence and management in a United Kingdom hospital: cross-sectional study. *Br J Nutr* 2009;102(4):571-5.

34. Lim SL, Tong CY, Ang E, Lee EJ, Loke WC, Chen Y, et al. Development and validation of 3-Minute Nutrition Screening (3-MinNS) tool for acute hospital patients in Singapore. *Asia Pac J Clin Nutr* 2009;18(3):395-403.